

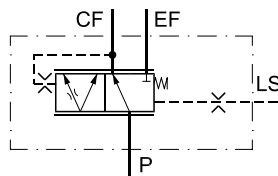
**Versions**

The OLS 40, OLS 80 and OLS 120 "in line" priority valves are used in load sensing steering systems together with OSPB LS, OSPC LS, OSPF LS, OSPD LS, OSPQ LS and OSPL LS steering units.

**OLS 40/80**



F300624



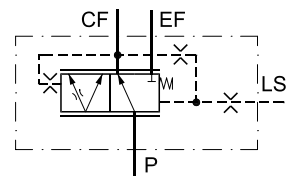
152B134.10

*OLS static*

**OLS 120**



F300623



152B171.10

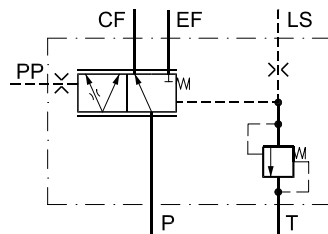
*OLS dynamic*

The OLS 160 "in line" priority valve is used in load sensing steering systems together with OSPB LS, OSPC LS, OSPF LS, OSPD LS, OSPQ LS and OSPL LS steering units.

**OLS 160**

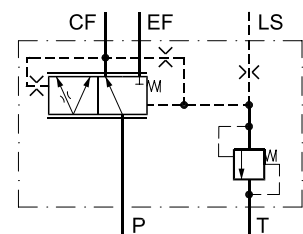


F300622



152B137.11

*OLS static*



152B172.11

*OLS dynamic*

OLS 160 is also available without pilot pressure relief valve.